



Mathematics 52

Quiz 1

Fall 2016

Professor: Mohammed Kaabar

Course ID: (27501)

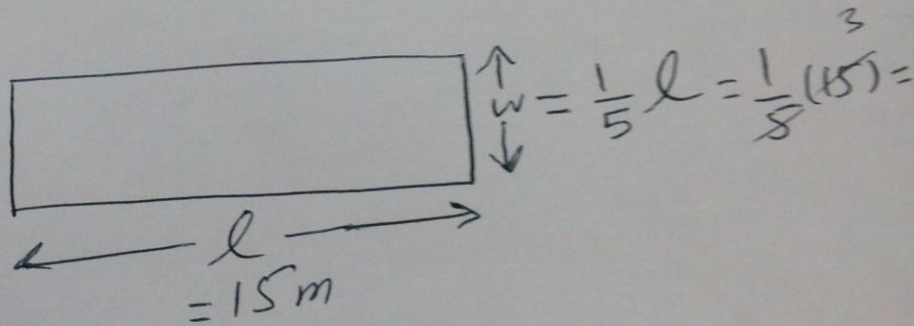
Student's Name: Mohammed Kaabar
Student's ID: Solution

10

Note: This quiz covers some problems from the **introduction to basic algebra**.

Problem 1 (5 points): Natalie rented a rectangular RV park space of length 15 meters and the width of the RV space is one-fifth its length. Find the area of Natalie's RV park space.

Hint: The area of rectangle is length multiplied by width.



$$\text{Area} = \text{length} \times \text{Width}$$

$$= 15 \times 3$$

$$= \boxed{45 \text{ m}^2}$$

Problem 2 (5 points): Translate each of following English phrases to the math language
(algebraic expression)

Part a: Seven added to five times some number, y .

$$7 + 5y \quad \text{or} \quad (7) + (5y)$$

Part b: Twenty-two percent of some number, x .

$$22\% \cdot x$$

$$\text{or} \quad \frac{22}{100} x$$

$$\text{or} \quad 0.22x$$

Extra Credit (2 points): Give two different word examples of constants.

① Date of Birth

② Production date of your car

or any other reasonable answers

